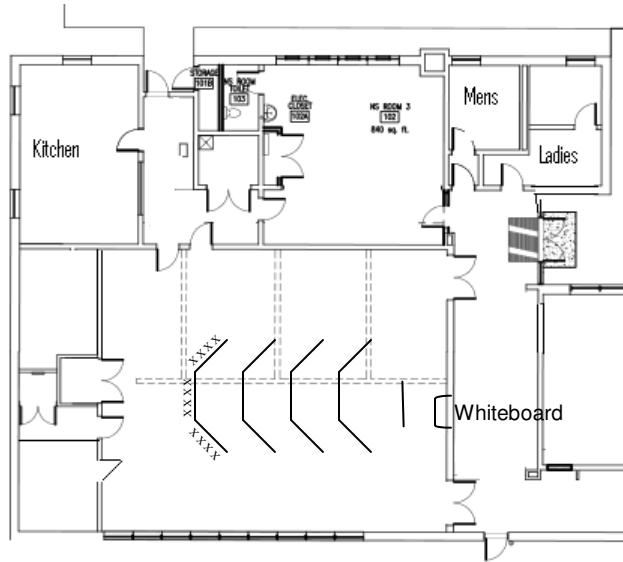


Christ Evangelical Lutheran Church

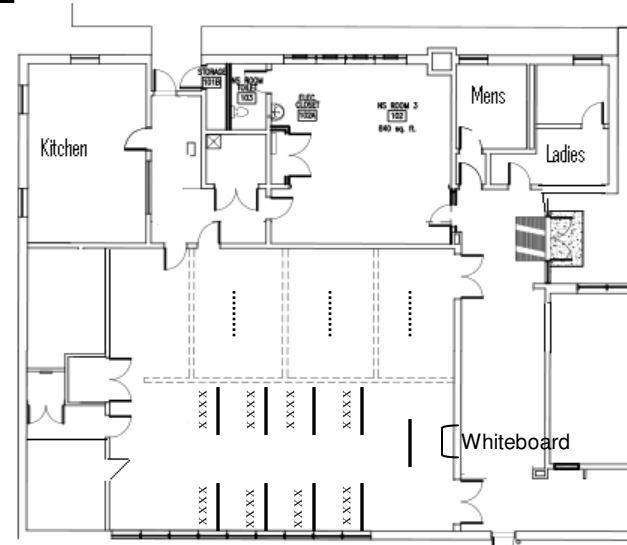
Basic Building Usage Layouts

(can be modified to the needs of the user)

SOCIAL HALL

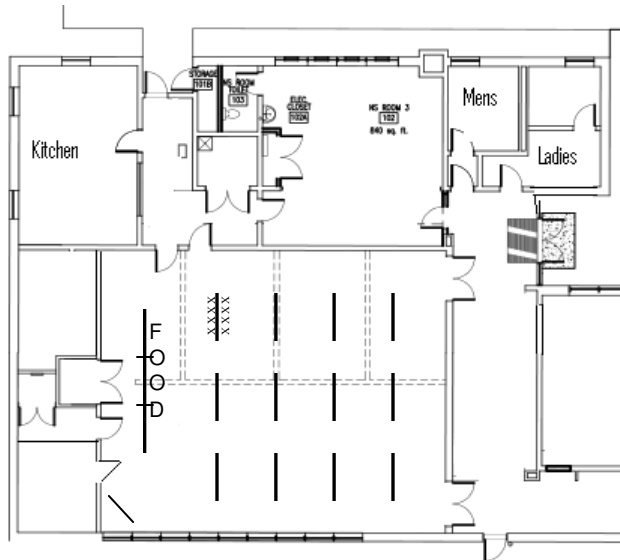


Full Classroom (48 Seats)

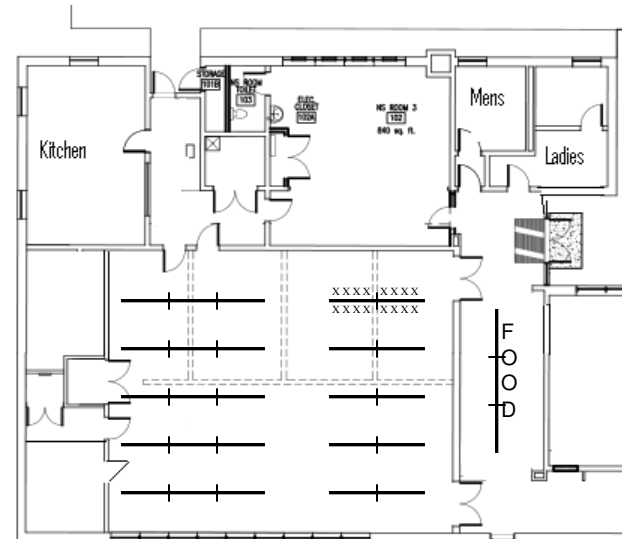


Half Classroom (32 Seats)
(3 Potential Breakout Rooms)

..... Moveable Partitions (if needed)



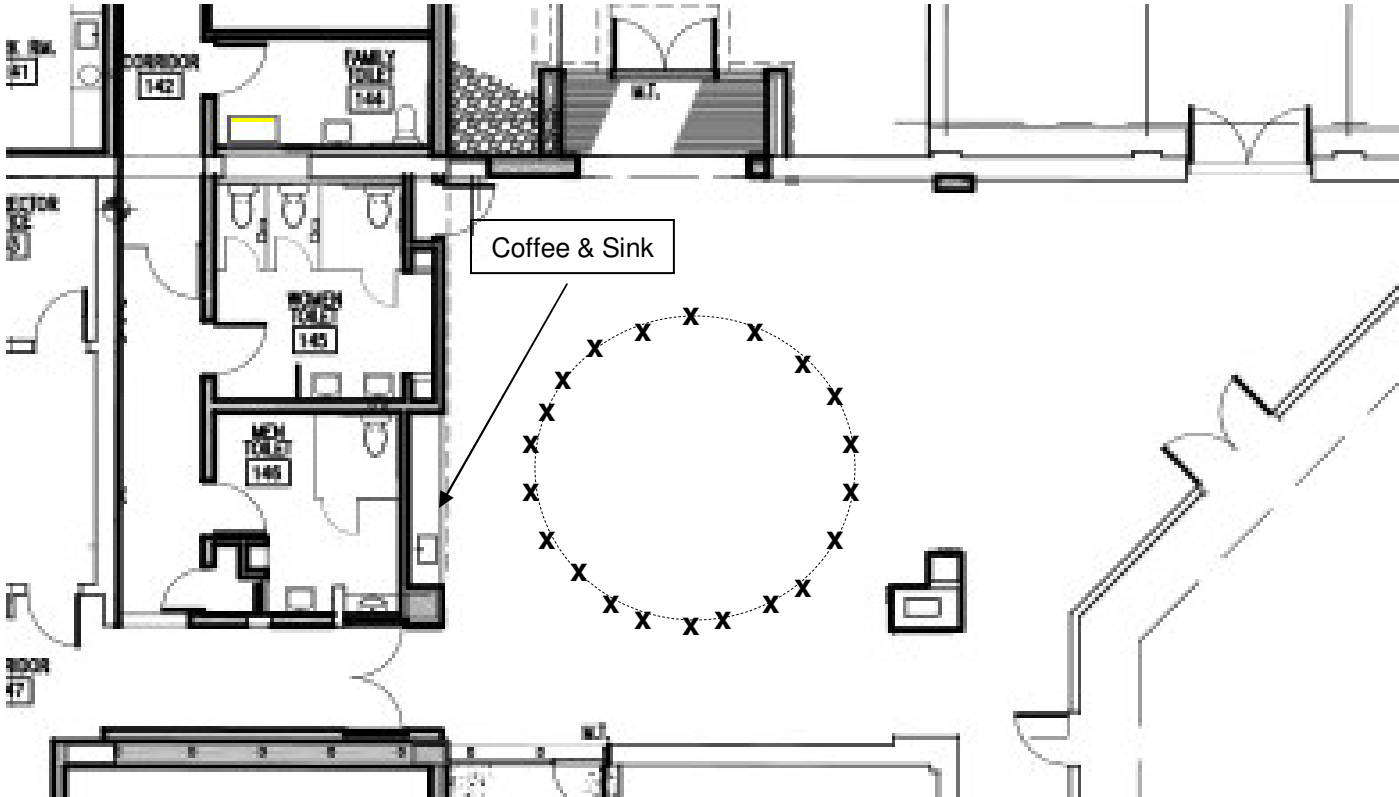
Group Meal (96 seats)



Group Meal (180 Max)

GATHERING AREA

Entrance



- Possible Options
- 1 - Chairs in a circle (32)
 - 2 - Chairs in a classroom style (50)
 - 3 - Chairs and tables (60)

SUNDAY SCHOOL

